

ibaCMC

New Features v3.7.0

Release Notes

Issue 3.7.0

Measurement Systems for Industry and Energy

www.iba-ag.com

Publisher

iba AG
Gebhardtstrasse 10-20
90762 Fuerth
Germany

Contacts

Head Office +49 911 97282-0
Support +49 911 97282-14
Technology +49 911 97282-13
E-mail iba@iba-ag.com
Web www.iba-ag.com

©iba AG 2026, All Rights Reserved

Issue	Date	Author	Changes
3.7.0	03-2026	rm	

New functions in version 3.7

The following new functions and improvements are available in *ibaCMC* from version 3.7:

1 Enhanced logbook features

When opening the logbook window, all logbook entries with status “open” are on display. For display of logbook entries you can choose between list or table style.

New parameters “tag” and “status” have been added. You can use tags to mark entries, in order to assign them to different subjects. You can use the status setting to indicate the operational state of an entry, e.g. “open”, “under observation” or “done”. Both parameters can be used for filtering the list, too.

You can edit a logbook entry in the detail view, e.g. to add notes or change the status. Moreover, you’ll find an extensive history, where all changes of an entry are logged.

New as well is the image viewer, which can be used for enlarging stored images in notes and download them.

In the signal analysis view, there is a new tab where your can see the related logbook entries. There you can create new entries, edit existing ones, and add notes to existing log entries. By default, all open log entries for the aggregate to which the displayed trend belongs are shown. The displayed level can be adjusted at any time using the breadcrumbs above the view.

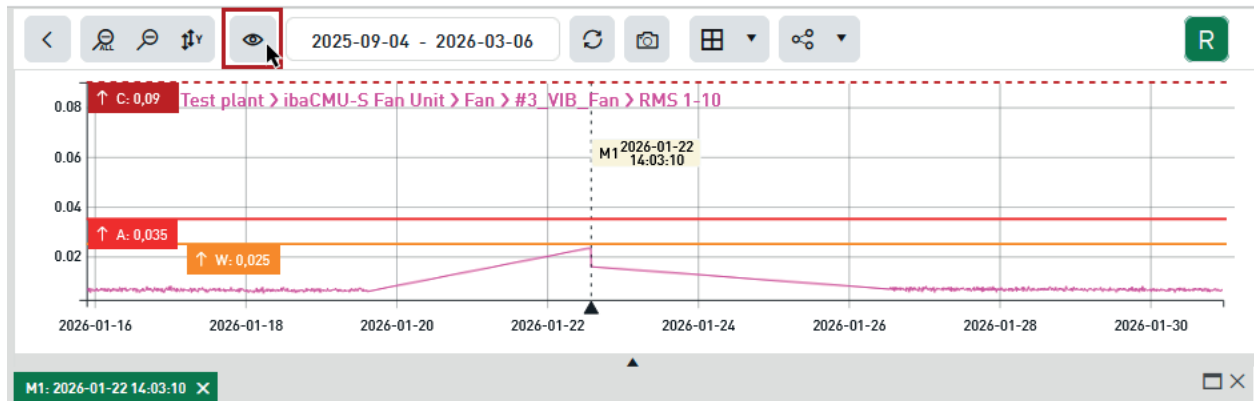
2 Alarm history

The alarm display was extended by an alarm history. The complete history of status changes can now be displayed for each characteristic value. Beside date and time of the alarm, the threshold level and actual value are shown too. Moreover, you can open the corresponding signal and trend analyses of each historic alarm.

Status	Date	Threshold	Value
Warning	2026-03-04 14:32:28	↑ W: 1.396 mm/s ²	1.415 mm/s ²
Warning	2026-03-04 04:32:28	↑ W: 1.396 mm/s ²	1.438 mm/s ²
Warning	2026-03-03 06:32:27	↑ W: 1.396 mm/s ²	1.417 mm/s ²
Warning	2026-03-03 02:32:27	↑ W: 1.396 mm/s ²	1.4 mm/s ²

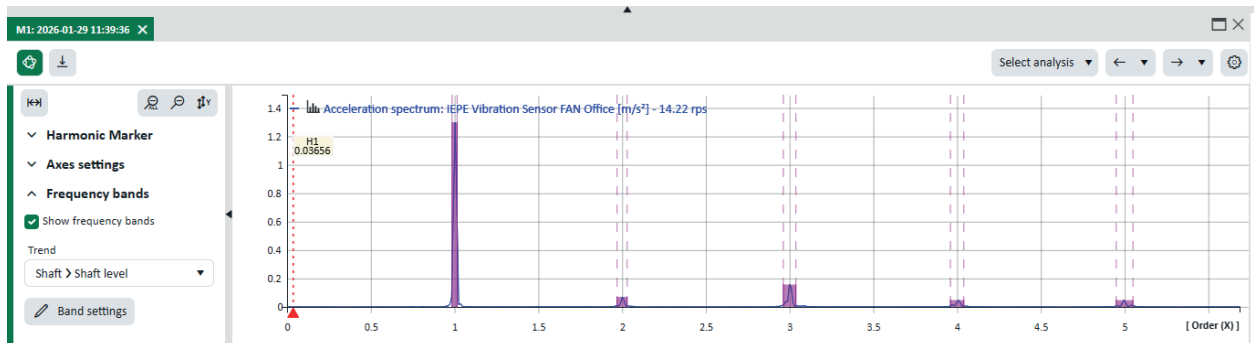
3 Threshold lines in trend analysis

The display of threshold levels, which are defined in a trend analysis can be toggled in the trend chart of the signal analysis. Moreover, the trend graph can be zoomed to the threshold range to make sure that all threshold lines are visible.



4 Frequency bands in signal analysis

The detail view of the signal analysis now provides the option to show the defined frequency bands in the trend graph. You can enable or disable the display of the frequency bands by a checkmark and you can select the desired asset trend from a pick list. Moreover, you can edit the frequency band settings directly from here. The frequency band display is available for the analysis types FFT spectrum and envelope spectrum.



5 New and changed sensor parameters

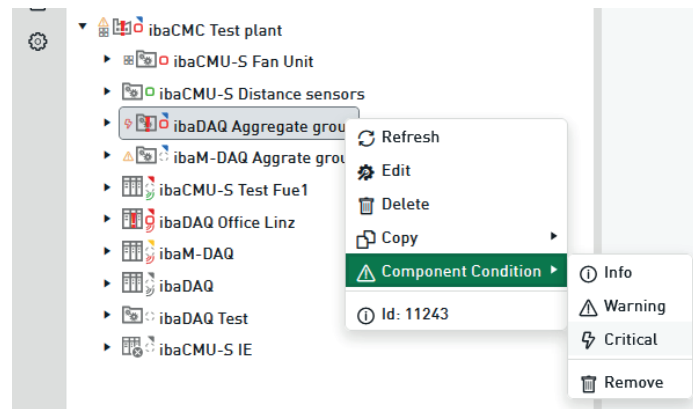
The parameter *Suppress DC enabled* for suppressing the constant component is now available for configuration of sensors (asset configuration). Enabling this option causes the removal of the constant component (average) when processing signals for calculation of RMS, filtered RMS and crest factor in *ibaPDA*. The activation does not affect the raw signal of the sensor.

The parameter *Bias voltage* was removed.

The parameters *Range Min* and *Range Max* are set automatically after you have entered the parameter *Sensitivity*. However, manual adjustment is still possible if needed, e.g. to scale an 24 V AC input of an *ibaM-4AI-IEPE* module correctly.

6 Status indication of components can be enabled in plant tree

The status of a component can be set directly in the plant tree via the context menu. Depending on the status, a small icon is then displayed in the plant tree. This allows conspicuous plant components to be marked so that they can be quickly found again during later analyses.



7 Improved cleanup of ibaCMU-S DAT files

The cleanup of DAT files now considers the measurement conditions. Before, it was possible that DAT files of one measurement condition were deleted partly, while DAT files of another measurement condition were deleted completely. The new feature grants that the cleanup of DAT files will be performed based upon the device-specific cleanup settings while considering the specific measurement condition.

8 New asset report template

A new template is available for the asset report. iba AG recommends updating the template.

9 Device migration supported by wizard

The migration from a CMU type *ibaCMU-S* to a type *ibaDAQ* is now supported by a wizard, which assumes tasks such as

- Updating the internal index
- Migrating the DAT file cleanup settings
- Migrating the envelope filter settings of the sensors
- Setting up MQTT topics for connection with *ibaPDA*
- Changing the CMU type to *ibaDAQ*

10 Preserving former buffer indexes of sensors and TCP channels after migration

When moving sensors and TCP channels from one CMU to another, new buffer indexes are assigned for reference of input channel and sensor. ibaCMC remembers the former indexes and the time range when they were valid. Thus accessing data in former DAT files is possible even after a migration to a new CMU.

A similar principle is also applied when changing a component's sensor. Here, too, the history is recorded so that the old measurement data from the other sensor remains accessible.