



## **New Features in ibaCapture v5.5.0**

Date                      2025-06-04

## Contents

<b>1</b>	<b>General Remarks.....</b>	<b>3</b>
1.1	Supported Windows Operating Systems .....	3
<b>2</b>	<b>Allow defining two-man-rule restrictions in user management.....</b>	<b>3</b>
<b>3</b>	<b>Support for video resolution changes .....</b>	<b>4</b>
<b>4</b>	<b>Smaller improvements.....</b>	<b>4</b>

## 1 General Remarks

### 1.1 Supported Windows Operating Systems

**Windows Server 2025 (x64)** was added to the list of supported operating systems.

The following operating systems are currently supported:

- Windows 10 (x86/x64)
- Windows 11 (x64)
- Windows Server 2016 (x64)
- Windows Server 2019 (x64)
- Windows Server 2022 (x64)
- Windows Server 2025 (x64)

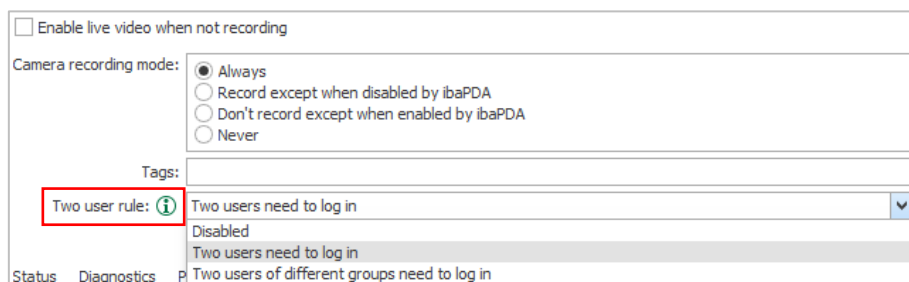
## 2 Allow defining two-man-rule restrictions in user management

The two-user rule is now supported by ibaCapture as a configurable restriction for camera access.

By default, this security mechanism is disabled and needs to be enabled explicitly for each camera where video access should only be possible with two different user accounts. There are two configuration options that affect the behavior when enabled:

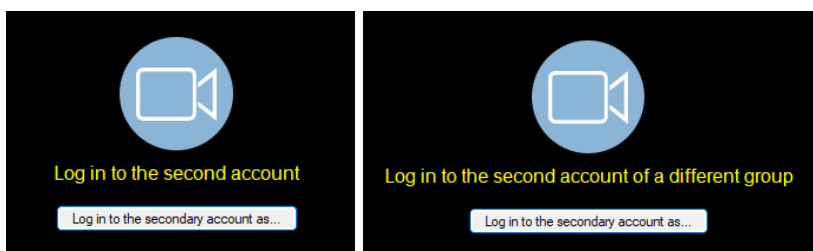
1. Two users need to log in
2. Two users of different groups need to log in

User accounts to jointly approve access to video of the camera are validated based on the chosen option. The access restriction can be configured via the 'Info' section of the camera settings, either when adding a new camera or retroactively for existing cameras.



The screenshot shows a configuration window for a camera. At the top, there is a checkbox labeled 'Enable live video when not recording'. Below it, the 'Camera recording mode' section has four radio button options: 'Always' (selected), 'Record except when disabled by ibaPDA', 'Don't record except when enabled by ibaPDA', and 'Never'. Below the recording mode is a 'Tags:' field. The 'Two user rule' section is highlighted with a red box; it contains an information icon and a dropdown menu currently set to 'Two users need to log in'. A dropdown arrow is visible on the right of this menu. Below the dropdown, the text 'Disabled' is shown. At the bottom of the window, there are tabs for 'Status', 'Diagnostics', and 'P'. The 'P' tab is active, showing a list of rules: 'Two users need to log in' and 'Two users of different groups need to log in'.

When enabled, a login prompt appears again after the first user logs in, requiring authentication by a second account — optionally from a different group, depending on the chosen configuration:



By enforcing the two-user rule, the system:

- Prevents unauthorized or unilateral access to video material
- Protects the privacy of individuals who may have been unintentionally recorded
- Ensures accountability by requiring cross-approval from two authorized users
- Grants access only when there is a justified and jointly confirmed need, reinforcing transparency and trust in sensitive operational environments

This feature is particularly relevant for mobile camera deployments, where controlling recorded content and preventing the unintended or unauthorized capture of individuals is more challenging.

### 3 Support for video resolution changes

With previous versions of ibaCapture, certain restrictions applied when the video recording configuration of a camera was changed.

Changes in video resolution or video codec that were applied to an existing camera configuration did lead to a situation in which previously recorded video was no longer accessible.

This restriction has been removed in ibaCapture v5.5.0.

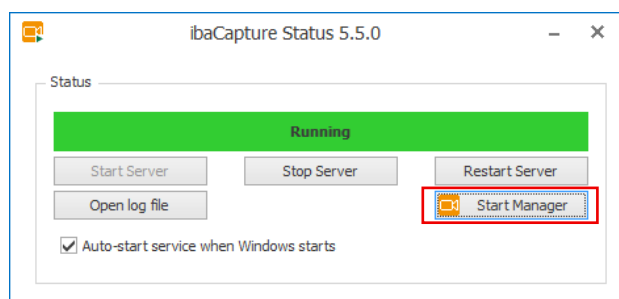
Full support for this change in other products requires using at least the following versions:

- ibaPDA v8.11.0
- ibaAnalyzer v8.3.0

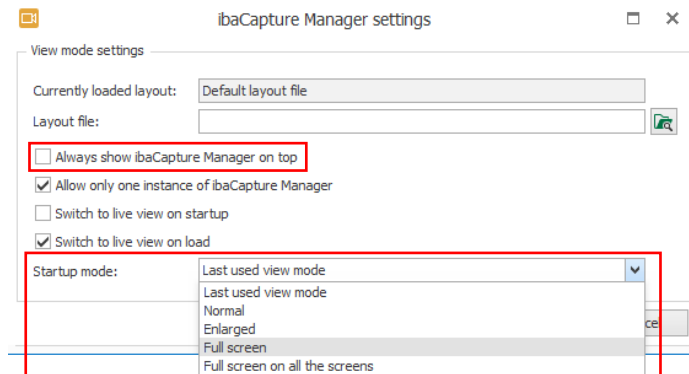
Backwards compatibility in combination with ibaCapture Server v5.5.0 is not available. If older versions of ibaPDA or ibaAnalyzer are used, error messages may be displayed when camera configurations have been changed.

### 4 Smaller improvements

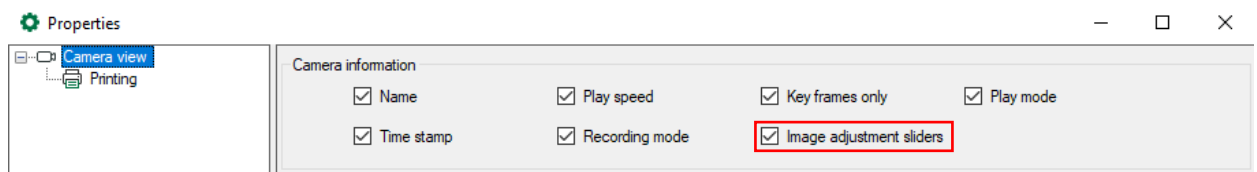
- The ibaCapture Manager can now be launched from the ibaCapture Status application.



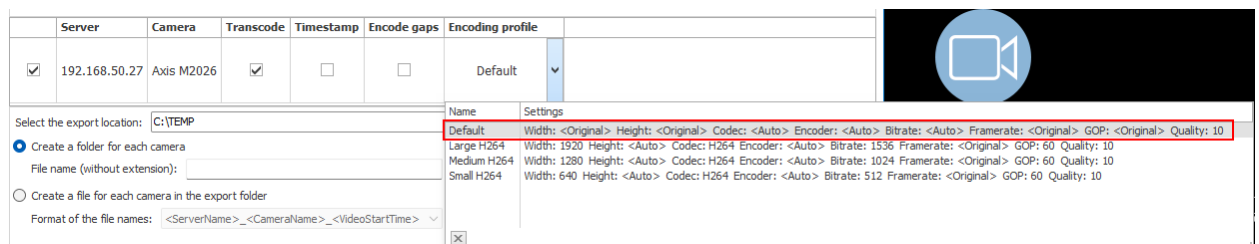
- The ibaCapture Manager can now be set to always be displayed on top and the screen mode on startup can be configured.



- The image adjustment sliders for brightness, contrast, etc. in the upper right corner of the camera view can now be disabled in the properties window. This can be used to avoid accidental changes by users.



- The creation of overlay images for cameras has been made easier by allowing lines to snap to angles and the overlay is now drawn instantly while placing polygon points. This makes it easier to create complex and clean looking privacy masks for cameras.
- When re-encoding video, a new “Default” profile can be selected.



This is a convenient way to create output video that matches stored video closely, for example when re-encoding due to an overlay image being enabled.

- In the camera storage configuration, a context menu has been added.

▼ **Video storage location**

☐ Use the default root path and camera name

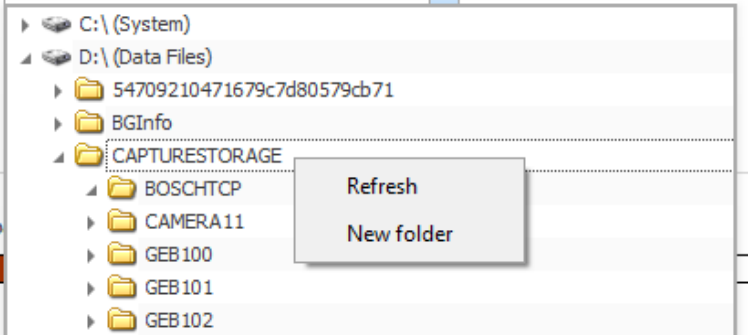
Video location at host **TEST104 (iba-fue-test104)**: D:\CAPTURESTORAGE\BOSCH

▼ **Video storage settings**

Allocated disk space

10,00 GB (of total disk sp

1150,5 GB 1369,0 GB



This allows refreshing the directory list and creating new folders.