



# **New Features in ibaDaVIS v2.11.0 Beta**

Author: T.George, iba AG - Fürth

Date: February 2023

<b>1</b>	<b>New Features .....</b>	<b>3</b>
1.1	Display KPI values as constants together with signals.....	3
1.1.1	Configuration and usage .....	3
1.2	Embedding ibaDaVIS .....	4
<b>2</b>	<b>Improvements .....</b>	<b>5</b>
2.1	Heat map supports vector data from the segment tables.....	5

# 1 New Features

## 1.1 Display KPI values as constants together with signals

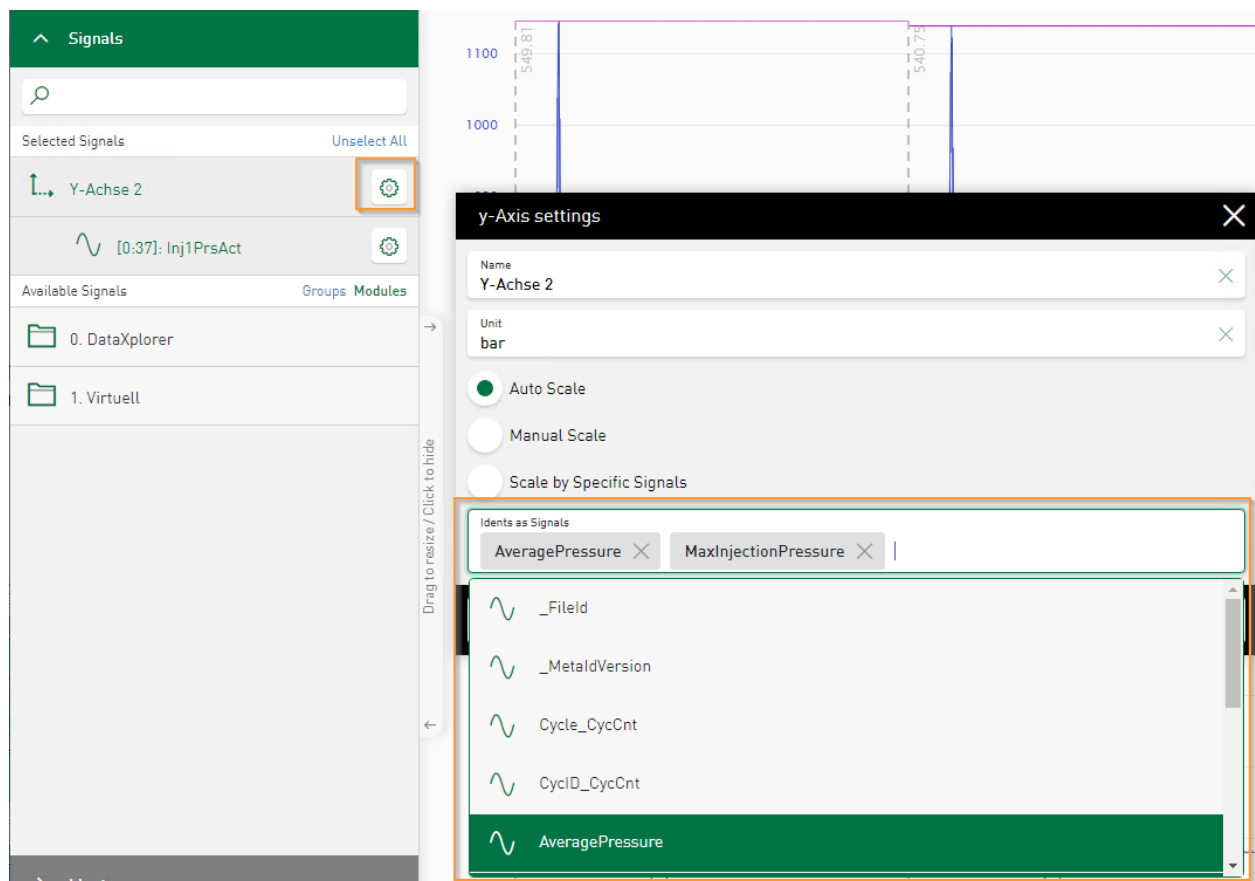
The line chart supports the visualization of signals from dat files or segment table data. Next to the signal data numeric or text values from the associated database record as Limit or setup values can be displayed as idents at the line charts. For numeric values the new feature has been added. The idents can be displayed as constant lines together with the common signals from dat files or segment table data.

### 1.1.1 Configuration and usage

Use a line chart tile which displays data from any dat file or segment table related data set.

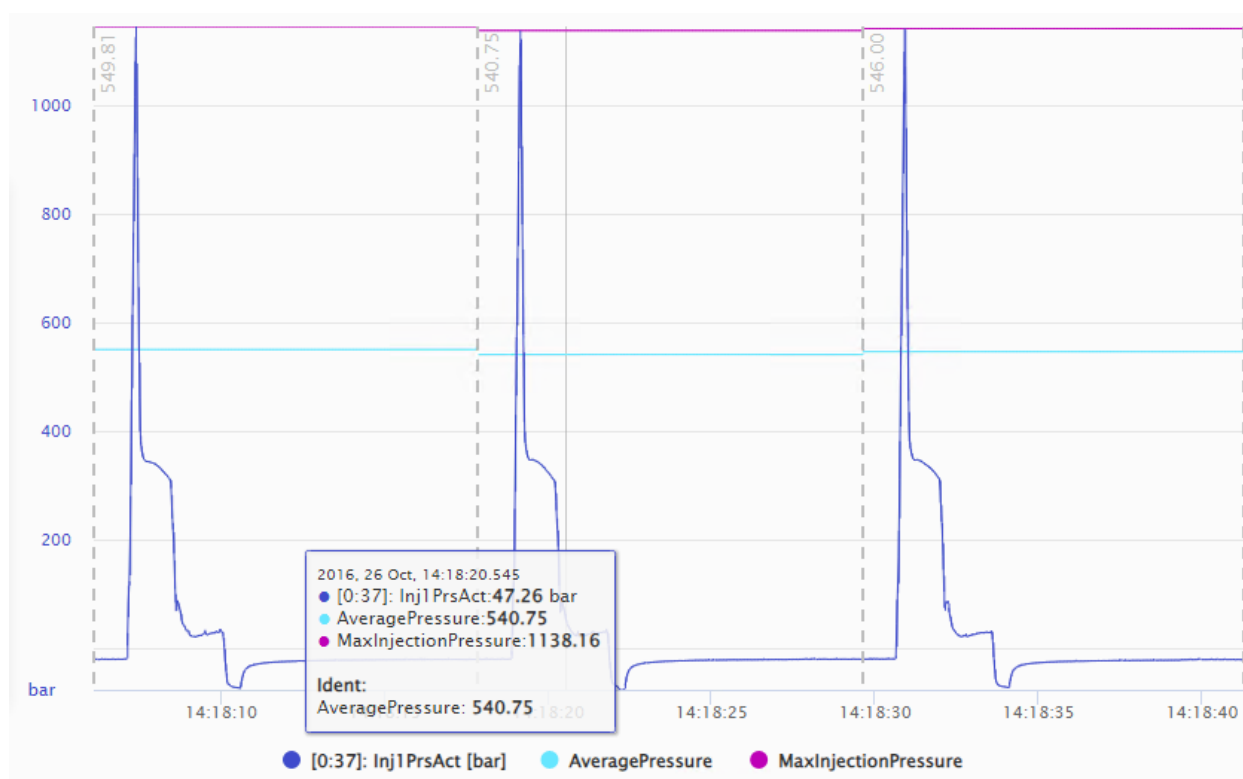
You'll find a new input field at y-Axis settings dialog.

Select here the ident by name which should be visualized together with the signal data as line chart.



The available numerical columns of the ibaFile table are provided as selectable dropdown field.

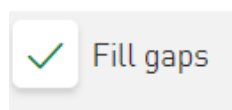
The selected column values are displayed as constant lines in the line chart and will represent the file specific value. If there is no default color defined at the datasource management the user ident color in the chart will be set automatically.



The values occur also at the crosshair when you're moving the mouse over the chart.

### 1.1.2 Fill Gaps for signals from segment tables

IbaDaVIS can visualize signal data from segment tables based on the ibaAnalyzer DB schema. The *Null* values in the timeseries data will result in displayed gaps between the measuring points. If the measuring points should be connected the option *Fill Gaps* added as option to the line chart showing signal data from segment tables.



## 1.2 Embedding ibaDaVIS

ibaDaVIS webpages can be embedded into other applications.

HMI systems such as WinCC or common HTML pages allow to embed webpages from other applications. There are two major requirement to achieve the embedding.

1. Switch to an SSL based communication.
2. Add the following tag to the ibaDaVIS configuration [config.json] file at the install directory

"CookieSameSiteMode": "None"

e.g. config.Json

```

1  {
2      "LogLevel": "info",
3      "CookieSameSiteMode": "None",
4      "Kestrel": {
5          "Endpoints": {
6              "HttpsInlineCertFile": {
7                  "Url": "https://*:443",
8                  "Certificate": {
9                      "Path": "C:\\temp\\[REDACTED].pfx",
10                     "Password": [REDACTED]
11                 }
12             }
13         }
14     }
15 }

```

Add a Webbrowser container at your HMI screen and navigate to the ibaDaVIS address. You're now allowed to login top ibaDaVIS and the behavior will be similar in your embedded browser to the use of a common browser. Use the same 2 steps are required in case you want to embed ibaDaVIS into common HTML 5 pages e.g. by using iFrame.

```

1  <!DOCTYPE html>
2  <html>
3  <body>
4      <h2>Target the link</h2>
5      <iframe src="https://localhost:443" height="800" width="1200" style="border:none;"></iframe>
6  </body>
7  </html>

```

### 1.3 Heat map supports vector data from the segment tables

With ibaAnalyzer DB it's possible to extract signals which are assigned to be a vector into data bases. These vector data for profile data or temperature scans which is stored in segment tables at your database are now enabled to be displayed at the heat map.

## 2 Improvements

### 2.1 Installer includes ibaManagementStudio Agent

The installation of ibaDaVIS offers to install the ibaManagementStudio Agent as additional component. The installation of the ibaManagementStudio agent is deactivated by default. ibaManagementStudio is a web-based tool that is designed as a central information node for different iba systems. With ibaManagementStudio, it is possible to create an overview of all currently connected iba tools, which can be accessed from any device with a browser. ibaManagementStudio requires an active agent, e.g. on the PC running ibaDaVIS, to monitor licenses or system status information. The installation of the agent is an optional function that can be omitted if it is not needed or the agent is already available.