



## **New Features in ibaHD-Server v1.6.1**

Author: T.George

Date: April 2016

## Table of contents

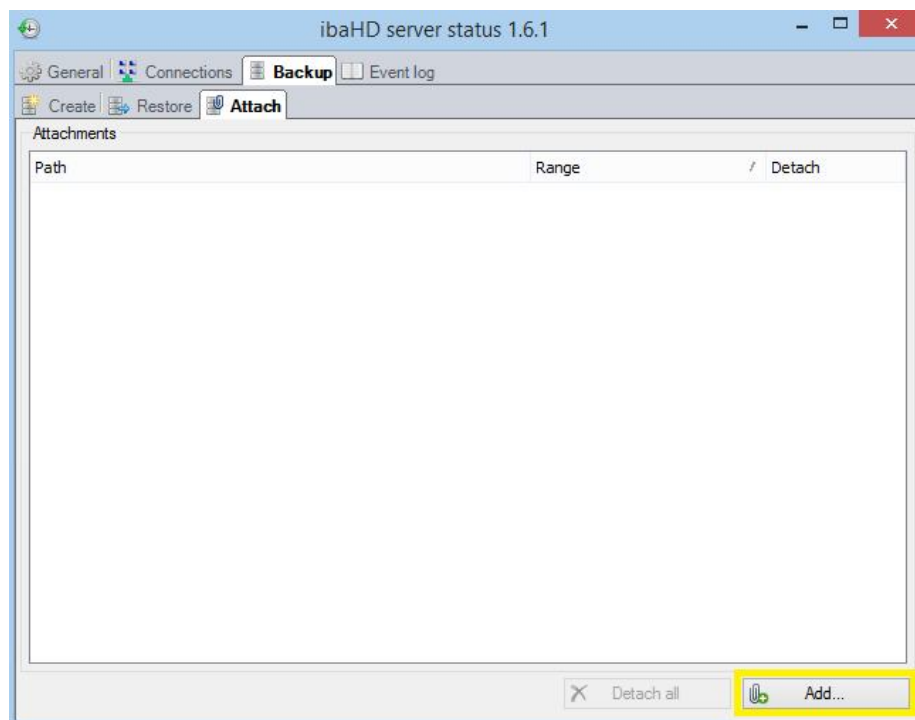
<b>1</b>	<b>Attaching backup .....</b>	<b>3</b>
1.1	Attaching backups .....	3
1.2	Detaching backups.....	7

# 1 Attaching backup

Backups of HD Stores can be opened in a read only mode as attached backup in ibaHD-Server. The data of an attached backup can be accessed for read or analysis purposes as a usual HD Store with ibaPDA Client or ibaAnalyzer.

## 1.1 Attaching backups

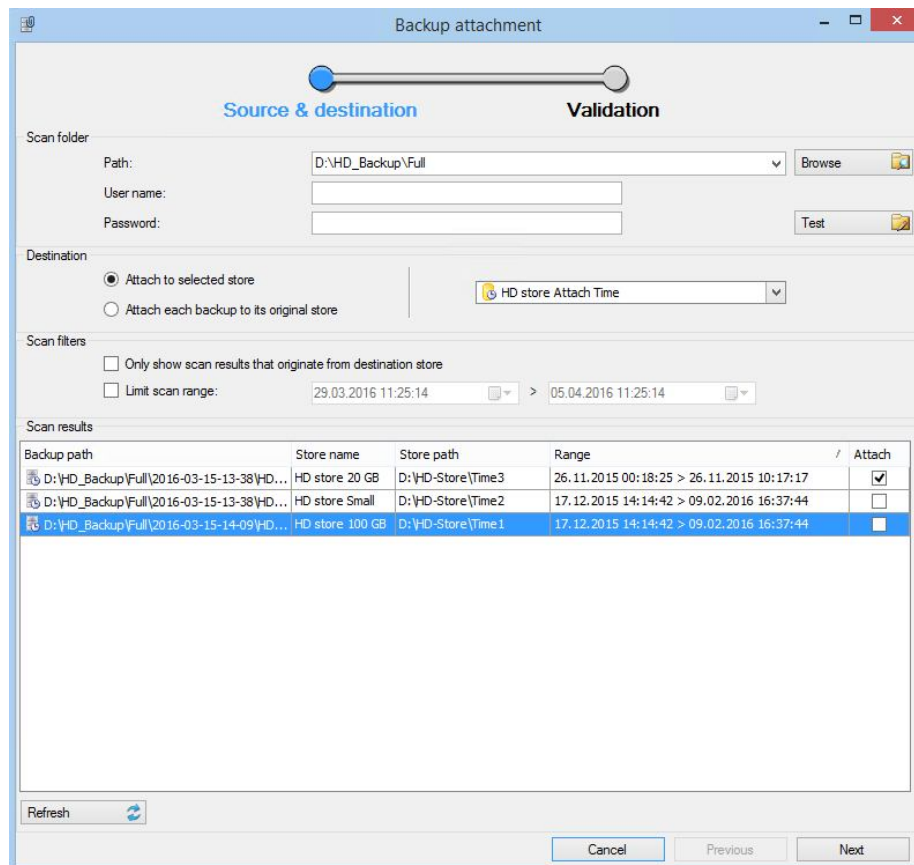
ibaHD-Server provides the function to attach backups in a separate tab next to the backup creation and restore tab at the server status dialog.



Click on **<Add...>** to start attaching backups

The attaching of backups is split into the definition for source and destination and the validation.





The configuration options of the dialog in details:

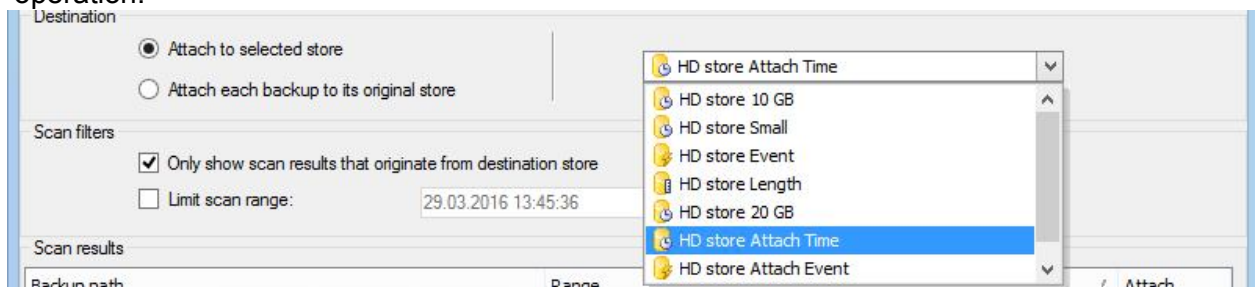
### Scan folder

Next to the usual folder selection to locate backups, the last folders of created backups are proposed.

### Destination

- *Attach to selected store*

One of the existing HD Stores must be selected as destination for the restore operation.



- *Attach each backup to its original store*  
Each backup contains information about its origin like the HD Store name and directory. This information is used to direct the data for the backup process.
- *Create non-existing stores*  
If the original HD Store does not exist it is going to be created.

Destination

☐ Attach to selected store
 ☒ Attach each backup to its original store

☐ Create non-existing stores

### Scan results and Scan filters

The table at the *Scan results* shows all backups which are detected at the *Scan folder* according to the used *Scan filters*.

The *Scan results* are updated each time one of the previous setting is changed.

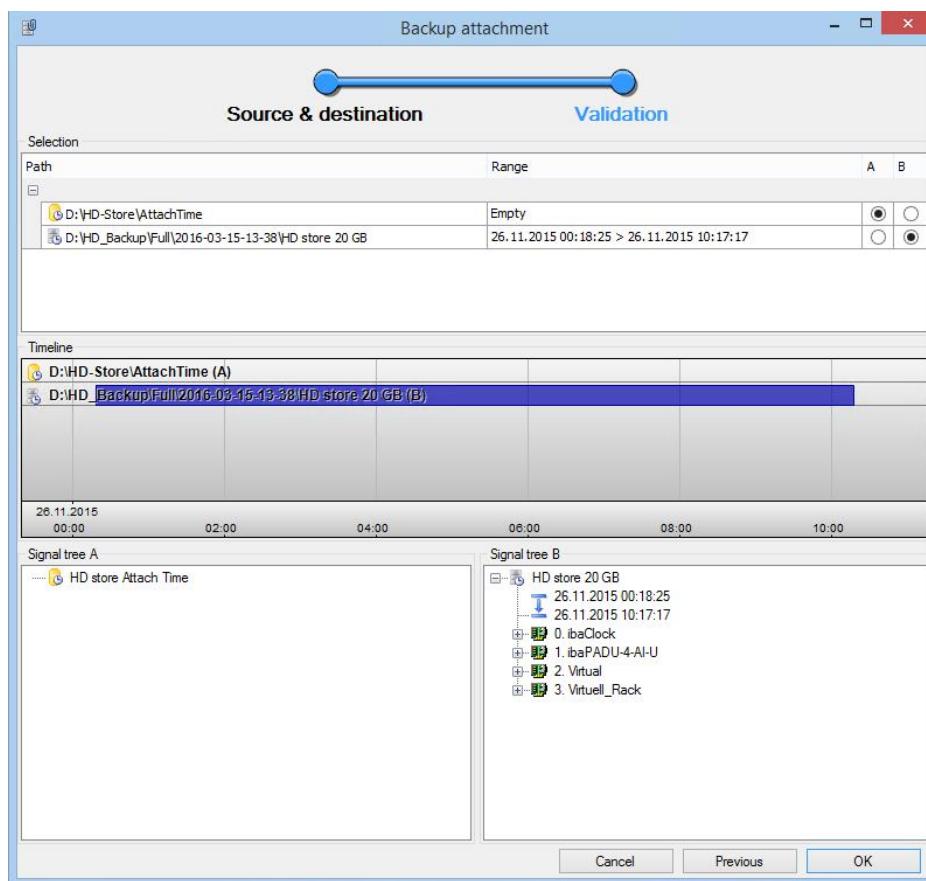
Scan results					
Backup path	Store name	Store path	Range	Attach	
D:\HD_Backup\Full\2016-03-15-13-38\HD...	HD store 20 GB	D:\HD-Store\Time3	26.11.2015 00:18:25 > 26.11.2015 10:17:17	<input checked="" type="checkbox"/>	
D:\HD_Backup\Full\2016-03-15-13-38\HD...	HD store Small	D:\HD-Store\Time2	17.12.2015 14:14:42 > 09.02.2016 16:37:44	<input type="checkbox"/>	
D:\HD_Backup\Full\2016-03-15-14-09\HD...	HD store 100 GB	D:\HD-Store\Time1	17.12.2015 14:14:42 > 09.02.2016 16:37:44	<input type="checkbox"/>	

Only the selected backups at column *Attach* will be processed.

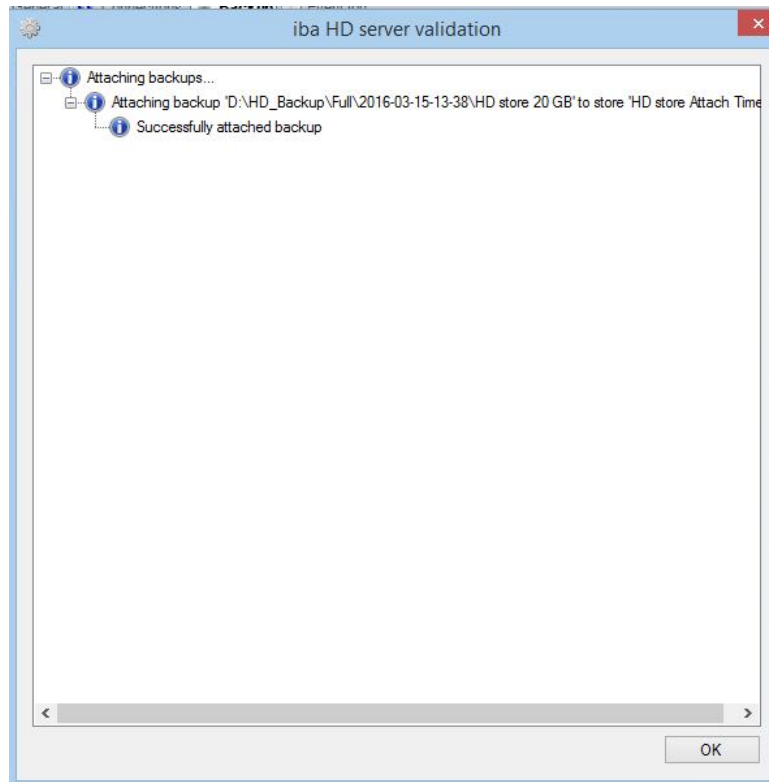
### Refresh

Force a rescan for backups at the actual *Scan Folder*.

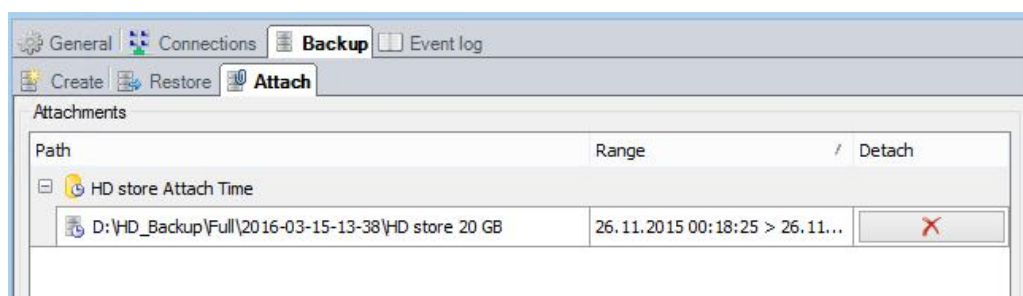
The data of the HD Store and the data of the selected backups for the attach operation are displayed together. The covered timespan and signals are visualized next to each other. Differences at the signal tree and overlapping time ranges can be detected manually.



After clicking **<OK>** the attaching starts.



The success of the attaching is documented in a message dialog. The attached backups are displayed at *Attach* tab of the ibaHD-Server status application.



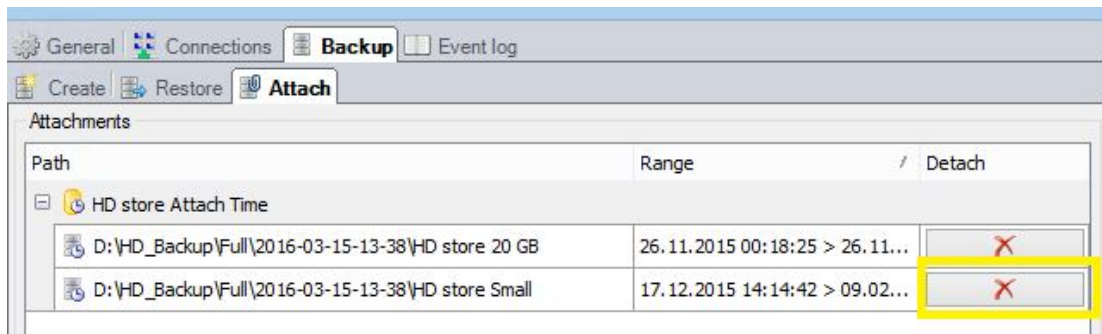
#### Note

One backup can be attached only to one HD Store of the ibaHD-Server.

For technical reason it is possible to attach 5 ( 32Bit System ) / 10 ( 64 Bit System) backups to one HD Store.

## 1.2 Detaching backups

The detaching of backups will disconnect the data of the backup from the HD Store.



Clicking to the button at the columns Detach will start the detaching