



ibaManagementStudio v1.1.0

New features

11/14/2022
iba Gent

Table of Contents

1	Diagnostics for iba software products.....	2
2	Support file generation.....	3
3	Remote ibaManagementStudio Agent upgrade.....	4
4	Localization	6
5	Editing the systems configuration	7
6	Miscellaneous	8

1 Diagnostics for iba software products

New pages were added to the ibaManagementStudio web client to display diagnostic information from different iba software products. In ibaManagementStudio v1.1.0, the supported products (and the available diagnostics) are the following:

- **ibaPDA (v8.1.1 or higher)**: service status, license information, configured modules, data store status, ibaPDA server connections, OPC server status, OPC UA server status, SNMP server status, IEC 61850 server status.
- **ibaHD Server (v3.1.0 or higher)**: service status, license information, data store status, ibaHD Server connections, ibaHD-API status.
- **ibaCapture (v5.2.0)**: service status, license information, camera acquisition status, ibaCapture server connections.

Support for other iba software products is planned for future ibaManagementStudio versions.

⚠ Important: To access the diagnostic information via the web client, ibaManagementStudio Agent v1.1.0 or higher must be installed and running on the remote system (on which one or more of the products listed above are installed and running). In addition to this, the agent service must be added to the systems configuration of the ibaManagementStudio Server.

⚠ Important: iba software products will attempt to connect to the ibaManagementStudio Agent using the default port 10521. This port can be changed via the ibaManagementStudio Agent status application. After changing the software interaction port, the iba software products must be restarted to reestablish their ibaManagementStudio connection.

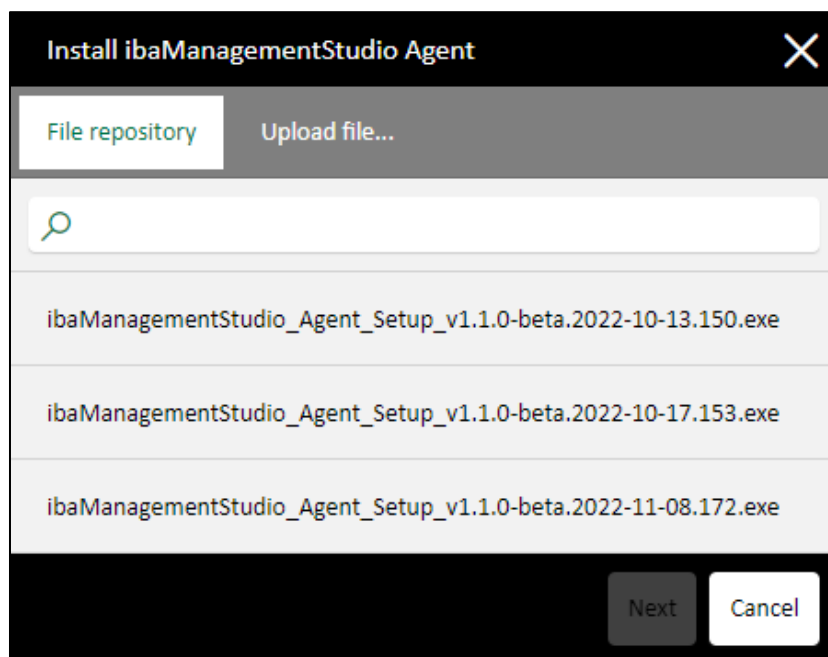
2 Support file generation

In addition to displaying diagnostic information, ibaManagementStudio supports the remote generation and download of support files for ibaPDA, ibaHD Server and ibaCapture. This feature has the same product version requirements as listed in [Section 1](#), as well as the installation of ibaManagementStudio Agent v1.1.0 or higher on the remote system. To generate a support file for a product, navigate to the corresponding product page and click the button 'Download support file' found under the tab 'General'. Note that the generated support files only contain server-related information. The remote generation of support files that include client information is planned for a future version of the ibaManagementStudio.

3 Remote ibaManagementStudio Agent upgrade

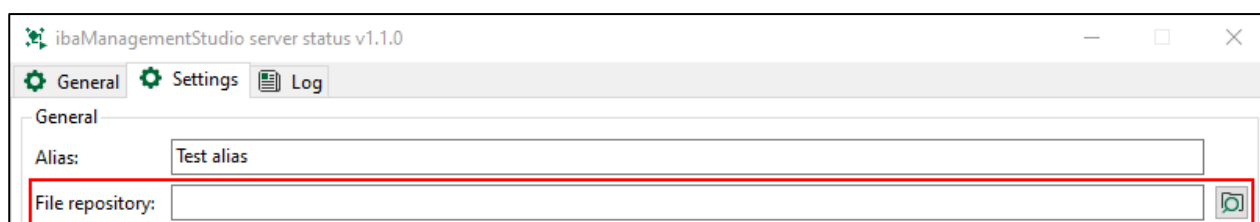
The ibaManagementStudio Agent can be upgraded remotely via the ibaManagementStudio web client. To start this process, navigate to the page of the system on which the agent service should be upgraded. On the tab 'General information', click the button 'Update ibaManagementStudio Agent'. This should open a popup allowing the user to select an ibaManagementStudio Agent installer file. ibaManagementStudio offers two options to select the installer file:

1. File repository:



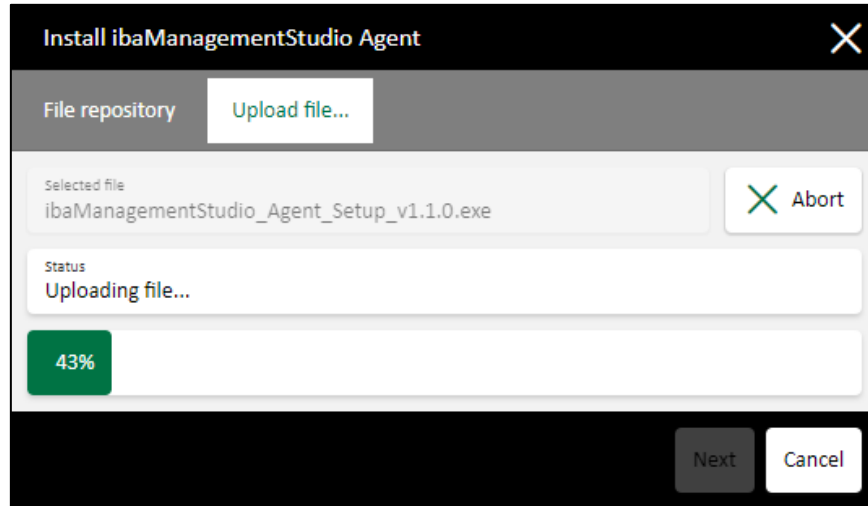
The ibaManagementStudio Server makes use of a local file repository where files can be stored for reuse. When setting up the upgrade task of the ibaManagementStudio Agent, the popup will list all the ibaManagementStudio Agent installers available in the repository.

Note: The default location of the file repository can be changed under the tab 'Settings' in the ibaManagementStudio Server status application.

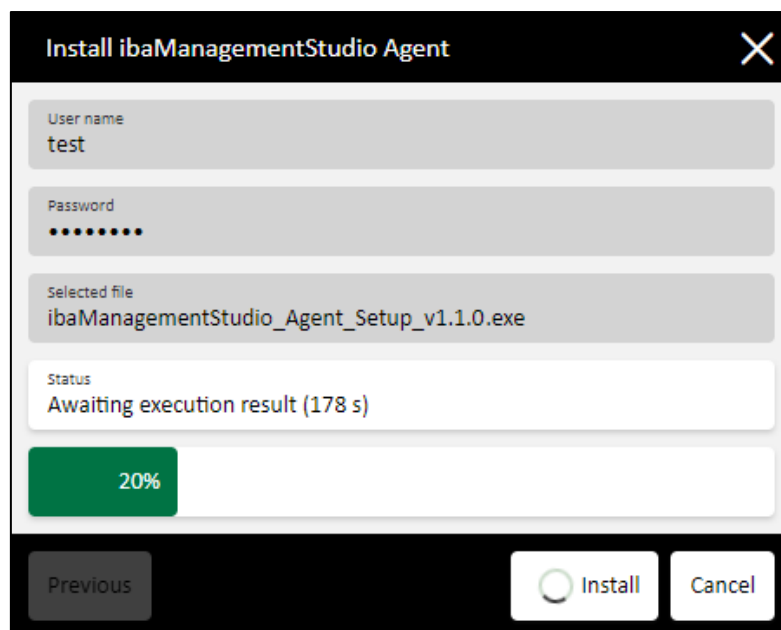


2. File upload:

If the repository does not contain the desired installer yet, open the tab 'Upload file...'. Pick the desired installer from the local file system and click the button 'Upload' to start uploading to the ibaManagementStudio Server repository. The progress bar will show the upload status.



After selecting an installer, click 'Next' to continue to the next step. Before the update can be started, the user must enter user credentials under which the installer will be executed on the remote system. After entering the credentials, click 'Install' to start the update task. This task consists of uploading the installer from the server repository to the remote system and executing the installer. The popup will show the progress of the update task. Note that the system will briefly appear as offline in the web client because the ibaManagementStudio Agent is updating itself.



⚠ Important: To update the ibaManagementStudio Agent on a remote system, the user must have a permission to make changes on this system. The permission 'Edit' for the specific system must be set by a user administrator in the ibaManagementStudio user management.

4 Localization

ibaManagementStudio supports the following languages: English, Italian, French, German, Spanish, Russian, and simplified Chinese. The server and agent status applications will try to use the configured system language. If unsupported, English is used. In the web client, each user can choose their own desired language via the profile page (or a user administrator can set this via the user permissions page). When 'Auto' is selected, the web client will try to use the browser's language. Again, if unsupported, English will be used as fallback language.

5 Editing the systems configuration

In the first version of the ibaManagementStudio, updating the configuration settings of an ibaManagementStudio Agent in the systems configuration could only be done by deleting and re-adding the system to the systems configuration. To simplify this workflow, server administrators can now edit a system entry in the systems configuration. An additional benefit of editing an entry is that the user permissions for the system will be persisted when applying the changed systems configuration.

To edit an entry, select the row and click the button 'Edit'. The popup, shown in the image below, will appear. On this form, the user can change the agent connection mode, the host and port number (if applicable) and the LAN access password (if applicable). Additionally, a description can be set for the system, that will be shown when navigating to the system's page. Note that systems running their ibaManagementStudio Agent in WAN mode cannot be configured manually. To change a system entry from LAN to WAN, start the ibaManagementStudio Agent in WAN mode and, in the popup, select the system from the WAN grid to overwrite the settings of the entry to be edited.

Edit system...

Reset

Settings

ID

10

Name

DEVPC

Description

This is a test description.

Connection mode

LAN

Host

127.0.0.1

Port

10518

Access password (LAN)

Replace by...

LAN systems

WAN systems

Refresh

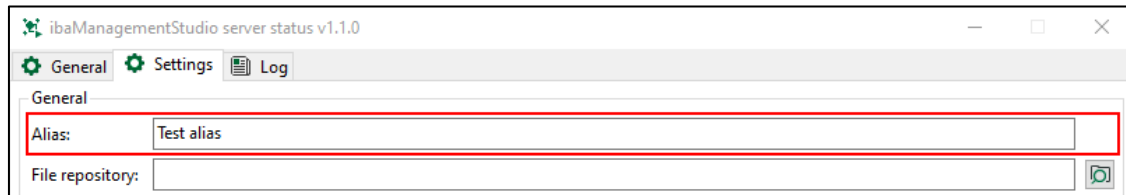
Name	Host	Port
DEVPC5	192.168.122.50	10518
DEVPC274	192.168.122.82	10518

Apply

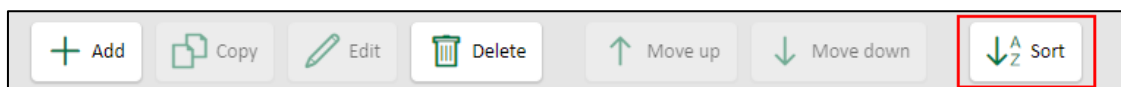
Cancel

6 Miscellaneous

- The ibaManagementStudio Server installer adds a web client shortcut in the start menu and on the desktop (optional). The web client can also be opened via the server status application.
- The name of the systems root folder in the web client can be changed by setting an ibaManagementStudio Server alias in the server status application.



- While defining a folder structure to organize the systems, a new button sorts the selected folder's contents alphanumerically.



- Entries in the systems configuration grid can be sorted by clicking the column headers. To sort against multiple columns, users must click the column headers while the Shift key is pressed. To clear sorting, click the column header while the Ctrl key is pressed.
- The nodes in the tree view on user management pages are sorted alphanumerically. Domain nodes were introduced to subcategorize domain users/groups.
- License information is shown in the ibaManagementStudio Server status application.

